

Manor Lakes Prep 2024



Manor Lakes Leadership



Scott Dellar

Executive Principal



Michael Lanyon

Primary Principal



Daniel Condon

Assistant Principal
Curriculum



Emily Batchelor

Assistant Principal
P-2



Sam Burden

Assistant Principal
3-6

Cultures within the College



At Manor Lakes P-12 College we have students who have connections to over 67 countries from around the globe.



Inclusivity



← → ↻ 🏠 🔒 manorlakesp12.vic.edu.au 🔍 📄 ☆ 📱 E

Compass Students ▾ Parents ▾



About Us Primary Secondary Supported Learning Wellbeing Enrolments Contact

Parent Payment Options 2023 +

Enrol now for 2024 +



entiation
akes

Transition from Kindergarten



We work with local Kinders to support the transition of all students from Kinder to School.

This includes families completing a questionnaire that allows us to get to know your child and address specific concerns and questions families may have. This is sent out in Term 4, once your child is enrolled.

We hold 4 transition sessions in Term 4 where students are invited into the prep classrooms to meet prep teachers and spend some time with future prep students getting to know what things we do at school.

Class sizes



At Manor Lakes College we currently have 8 prep classes averaging 18-20 students per class.

- They are named alphabetically Prep A, Prep B, etc...
- E.S. to support at the start of the school year
- Designated playground and prep teachers are allocated to the prep area for yard duty.

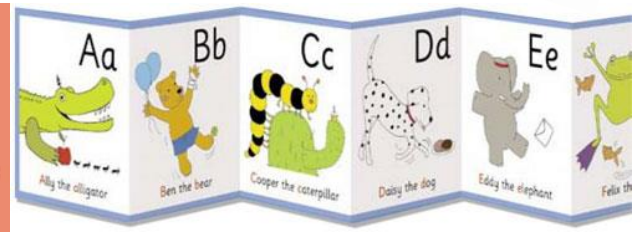
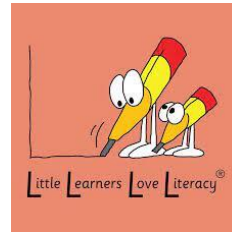


Phonics Approach



Research has demonstrated that students learn to read best through a phonics approach. You may have seen it mentioned in the newspapers that this approach is now supported within the curriculum, with all Victorian schools expected to move towards this approach away from other approaches.

In Foundation at Manor Lakes, we have been teaching phonics and literacy skills aligned with the Science of Reading and Learning for a number of years, in the younger years we do this through the Little Learners Love Literacy phonics program.



Phonics Approach



Little Learners Love Literacy is a systematic synthetic phonics Program that support all children to be successful readers and spellers.

A systematic synthetic phonics teaches;

- all 44 phonemes (the sounds letters make) in a logical order,
- children to blend phonemes to read words,
- children the alphabetic code - different spelling of each phoneme
- children to identify phonemes in words for spelling (segmenting)

More information about LLLL for parents:

<https://www.littlelearnersloveliteracy.com.au/pages/faqs#parents>

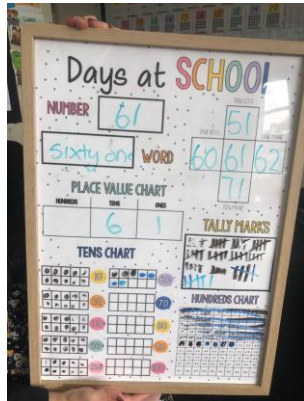


Numeracy

Number sense

Is an approach to teaching numeracy that involves multiple exposures and developmentally appropriate experiences with materials to build rich numeracy understanding in children. E.g. not focusing on algorithms

100 days of school



Students are exposed to counting and representing numbers in multiple ways from the first day of school. It ends with a large celebration when we arrive at our 100th day.

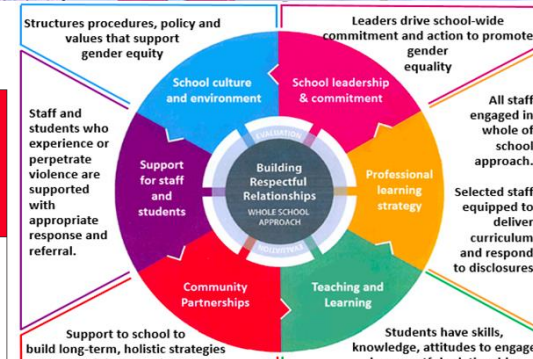
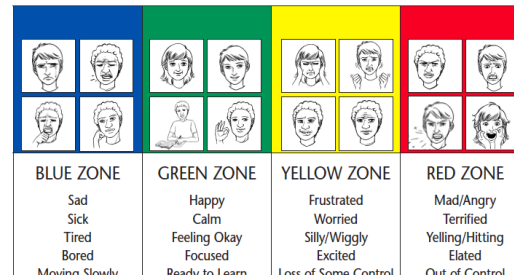
Personal and Social Skills



- Zones of Regulation
- RRRR (Rights, Resilience, Respectful Relationships)
- School Values (Respect, Aiming High, Being Safe, Valuing Community)
- Growth Mindset

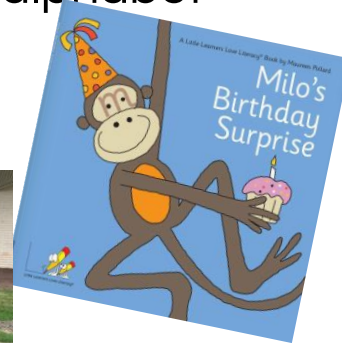
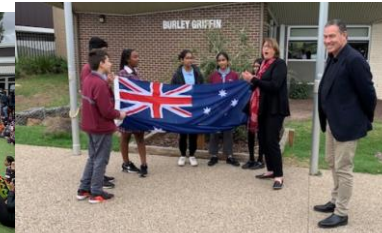


The **ZONES** of Regulation®



Specialists Programs/Events

- Sports - indoor gym, outdoor ovals and basketball courts
- Art - three dedicated art rooms, murals created by art team and students around college
- Performing Arts
- Milo's birthday party - celebrating learning all letters of the alphabet
- 100 Days of School
- Colour Run, Harmony Day, Book Week, NAIDOC week
- Mothers/Fathers day stall



Buddies Program



In Grade Prep, we have buddies from Grade 6. Each Grade Prep class is matched with a Grade 6 class, with each prep having 1 or 2 Grade 6 buddies. We meet our buddies in Term 1 and they help us in the yard, have lunches with us, read with us and make lots of fun craft with us!



Benefits of the Buddy program

- Prep students having another positive role model within the school
- Prep students having someone to go to if they are worried/scared in the playground
- Prep and Grade 6 children developing new and positive relationships



Wellbeing



Manor Lakes College additional programs such as:

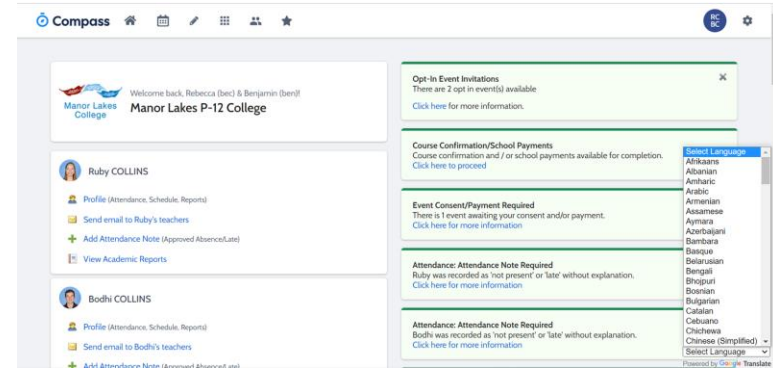
- Prep Nursing Program- checks eyes, hearing, general concerns
- Dental Van visits - through the medicare program
- Smith Family Scholarships with health care cards
- Camps, Sports, Excursions Funding (CSEF) funding for families with health care cards
- Food bank - fresh fruit, emergency lunches and food hampers
- Mental Health & Wellbeing Co-ordinator; explicitly teach students about mental health, run social skills groups, support students with disabilities and regulation.
- **Breakfast Club:** Everyday 8-8:30am





Communication With Parents

- Open and consistent communication with teacher
- Attendance at parent teacher interviews - occur Term 1 and Term 3
- Reports - Semester 1 and 4
- Information nights
- Discussions with leadership
- Compass
 - Our management system for attendance and communication
 - Parent teacher conferences
 - Reports
 - Excursions and permissions
 - Payments
 - Absences
 - Sickbay (3 registered nurses)



Out of School Hours Care



Before and After School Care/Holiday care will be conducted through Big Childcare. Before School Care commences at 6:30am, and After School Care concludes at 6:30pm. Enrolment form for this program are available at the College office, and all enquiries regarding the program can be made by calling 0421 641 603 or emailing manorlakes@bigchildcare.com

The program is conducted from the College's Barlee Gymnasium (at rear of school). Prep students are taken to their classroom after Before School care and collected from their respective classrooms each day if they are attending After School Care.



What's Next ?



School Zone

DNA- Designated Neighbourhood Schools

<https://www.findmyschool.vic.gov.au/>

Re-zoned for 2024 school year

Only families residing in our school's DNA



Scan to find your school
for 2024

What's Next ?



Enrolment

SCAN HERE



**Manor Lakes P-12
College ENROLMENT
ENQUIRY**

To begin the enrolment process, please complete the questions below.

[Sign in to Google](#) to save your progress.
[Learn more](#)

** Indicates required question*

Email *

Your email address

Parents Email

Your answer

Parent Full Name *



Form to Enrol in a Victorian Government School

Enter school name and campus (if applicable) here

STUDENT ENROLMENT INFORMATION - 20____ OFFICE USE ONLY CASES21 Student ID:

The information requested in this form is required for enrolment purposes. This information is collected to plan for and support the educational needs of students.

This form should be completed by parents or carers who are responsible for enrolling their child. It is the responsibility of the person completing this form to consult with all other adults that need to be involved in the enrolment process. Parents or carers can co-sign the same form or complete separate forms if personal details are unable to be shared between them.

If required information is not provided or there is a dispute between parents or carers about a child's enrolment, the enrolling principal is required to consider the student's education and wellbeing when deciding whether to defer or accept the enrolment.

Only one enrolment form should be submitted per student. By completing and submitting this enrolment form, you are accepting a place for your child at the specified school (subject to any further checks required by the school).

All schools across Australia are expected to collect the same information. Questions marked with a * are asked as a requirement of the Commonwealth Government to meet data collection, funding and reporting requirements under the Australian Education Regulations 2013.

STUDENT DETAILS

Surname:

Next Session: Enrolled Students



Parent Information session times will be emailed to parents who have enrolled their children.

Topics covered

- How to get ready for school
- Curriculum breakdown, including approaches
- Day in the life of a prep
- Testing and transitions
- Canteen, bell times, parent resources etc
- School Uniform
- Transition dates
- Tours



In and around the school



In and around the school



Questions?





Thank you

For general enrollment enquiries please contact the office.

Danielle Godfree

Contact - (03) 9741 4202

Email - danielle.godfree@education.vic.gov.au

For specific enquiries contact

Emily Batchelor (Assistant Principal P-2)

Email - emily.batchelor@education.vic.gov.au